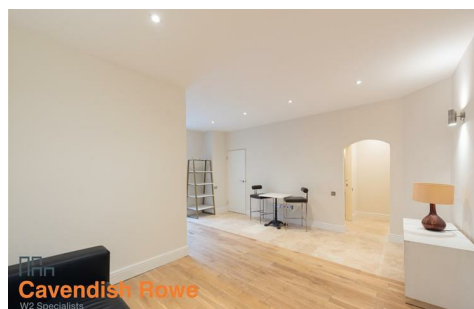


Gloucester Terrace, W2 3HB

£525,000



A well-located 2-bedroom lower ground floor apartment with its own private entrance, offering approximately 531 sqft (49 sqm) of floorspace.

Just a 7-minute walk to Paddington and Lancaster Gate stations and 10 minutes to Hyde Park.

Surrounded by excellent amenities, making it a convenient and comfortable home or investment in a prime part of W2.

Gloucester Terrace, W2

Approx. Gross Internal Area *

531 Ft² - 49.33 M²

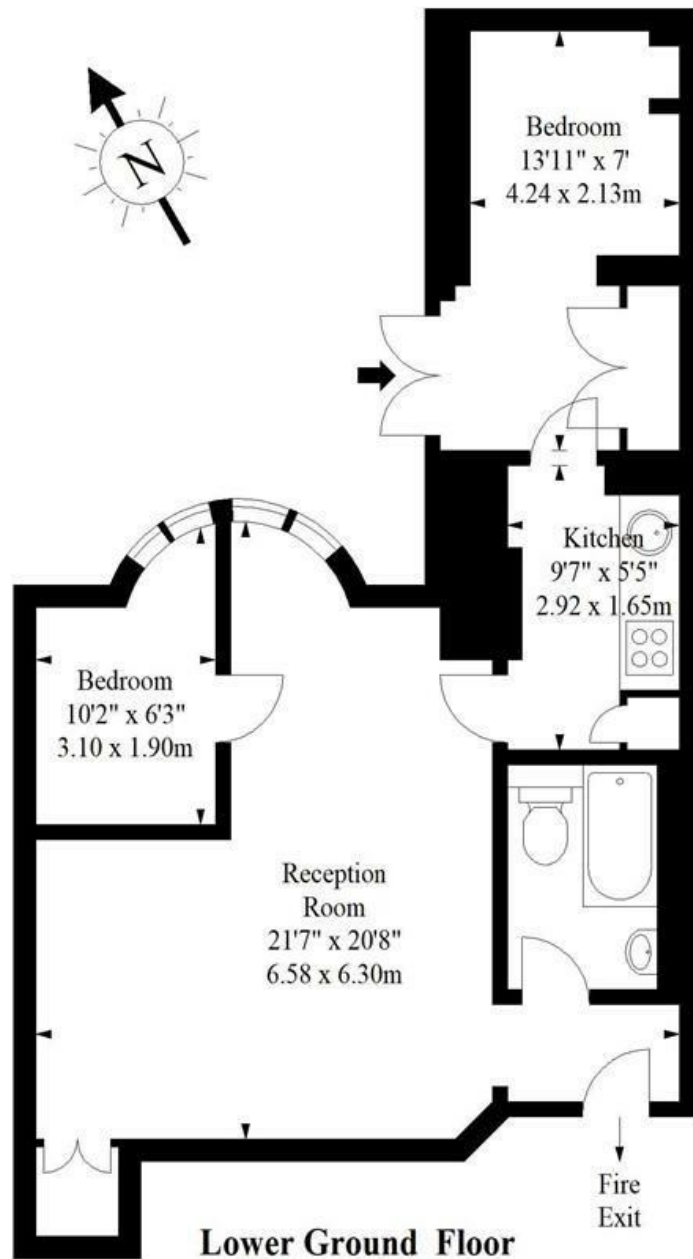


Illustration For Identification Purposes Only. Not To Scale

* As Defined by RICS - Code of Measuring Practice

© Cavendish Rowe

Tel 44 (020) 726 28833

CavendishRowe.co.uk

Energy Efficiency Rating	
Current	Potential
Very energy efficient - lower running costs	
(92 plus) A	
(81-91) B	
(69-80) C	
(55-68) D	
(39-54) E	54
(21-38) F	
(1-20) G	
Not energy efficient - higher running costs	
England & Wales	
EU Directive 2002/91/EC	

Environmental Impact (CO ₂) Rating	
Current	Potential
Very environmentally friendly - lower CO ₂ emissions	
(92 plus) A	
(81-91) B	
(69-80) C	
(55-68) D	
(39-54) E	
(21-38) F	
(1-20) G	
Not environmentally friendly - higher CO ₂ emissions	
England & Wales	
EU Directive 2002/91/EC	